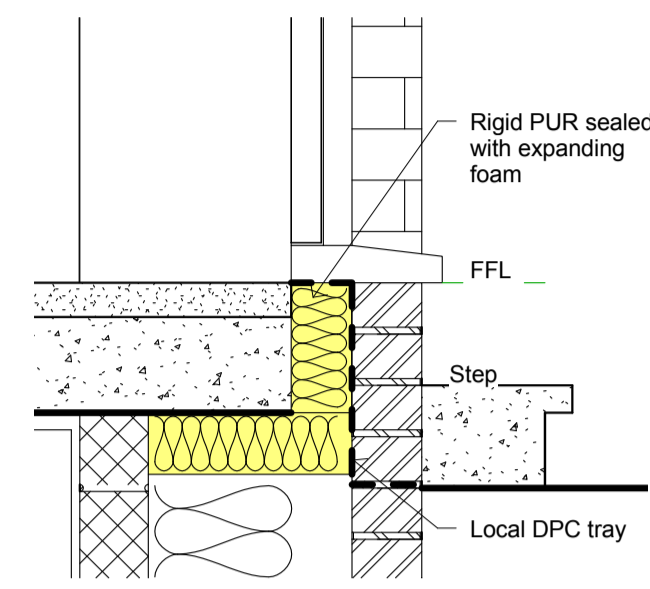
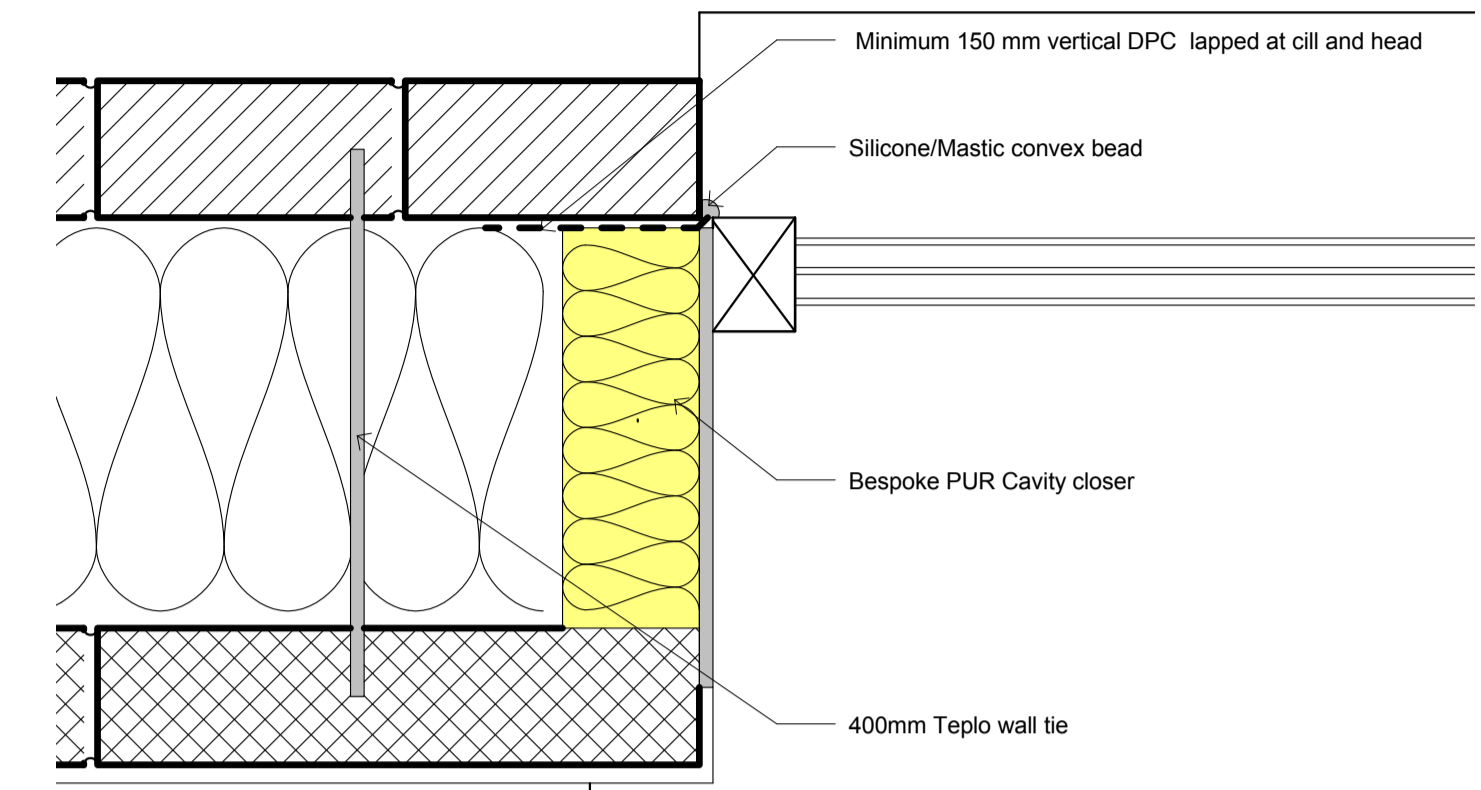


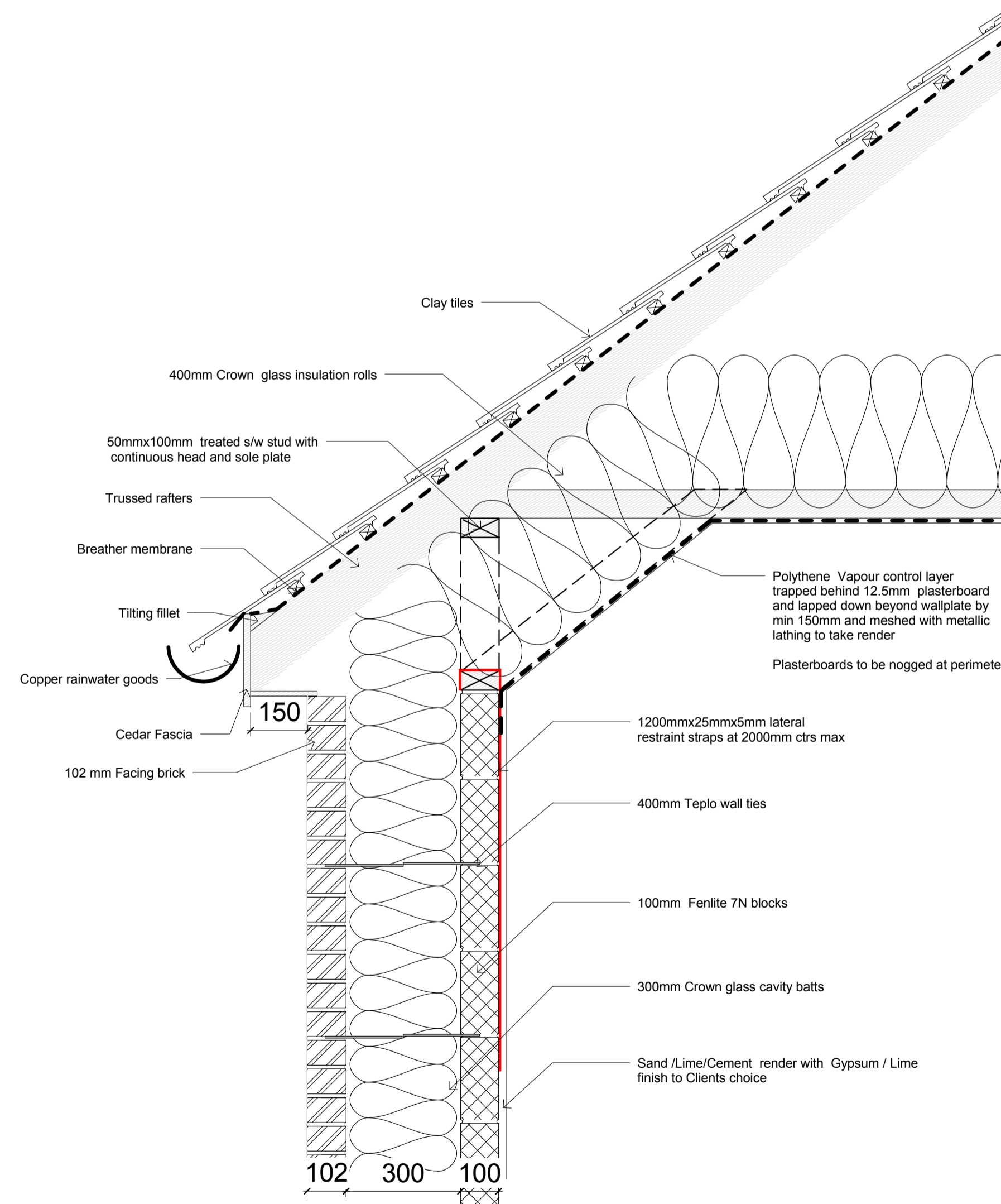
Wall / Floor detail 1:10



Threshold detail 1:10



Cavity closure detail 1:5



Eaves Detail 1:10

U-VALUES
 Wall u-value above ground approximately 0.12W/m²K based on method illustrated. 300mm Fibreglass batts having a thermal conductivity [k-value] of 0.04W/mK
 Wall u-value below ground approximately 0.16W/m²K based on method illustrated. 200mm Polystyrene cavity batts having a thermal conductivity [k-value] of 0.035W/mK
 Roof u-value approximately 0.1W/m²K based on method illustrated. 400mm Fibreglass quilt having a thermal conductivity [k-value] of 0.04W/mK

No.	Description	Date
	Floor/wall detail 1:10	
	Eaves Detail 1:10	
	Threshold detail 1:10	
	Cavity closure Detail 1:5	

**7, South Drive,
 Sonning,
 RG4 6GB**

Project number	-
Date	24.11.2008
Drawn by	MDG
Checked by	-

APC4

Scale	As indicated
-------	--------------

DO NOT SCALE THIS DRAWING.